

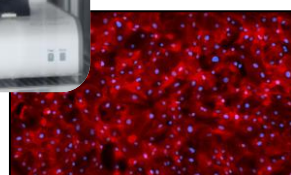


HOW?

PhysioStim's HFpEF cocktail



xCELLigence RTCA CardioECR



hiPSC-derived cardiomyocytes

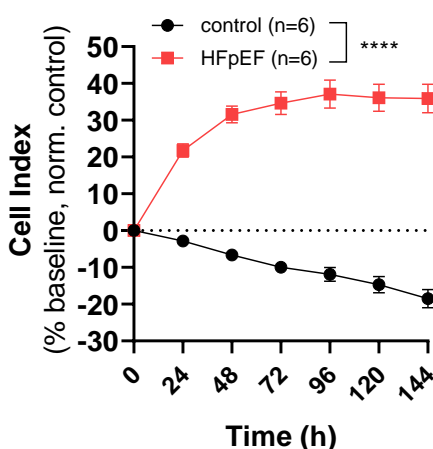


HFpEF

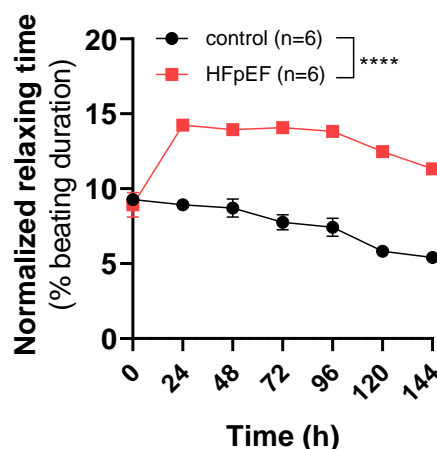


PHYSIOSTIM'S HFpEF COCKTAIL INDUCES A REVERSIBLE HFpEF PHENOTYPE

CARDIOMYOCYTES HYPERTROPHY



'DIASTOLIC DYSFUNCTION'

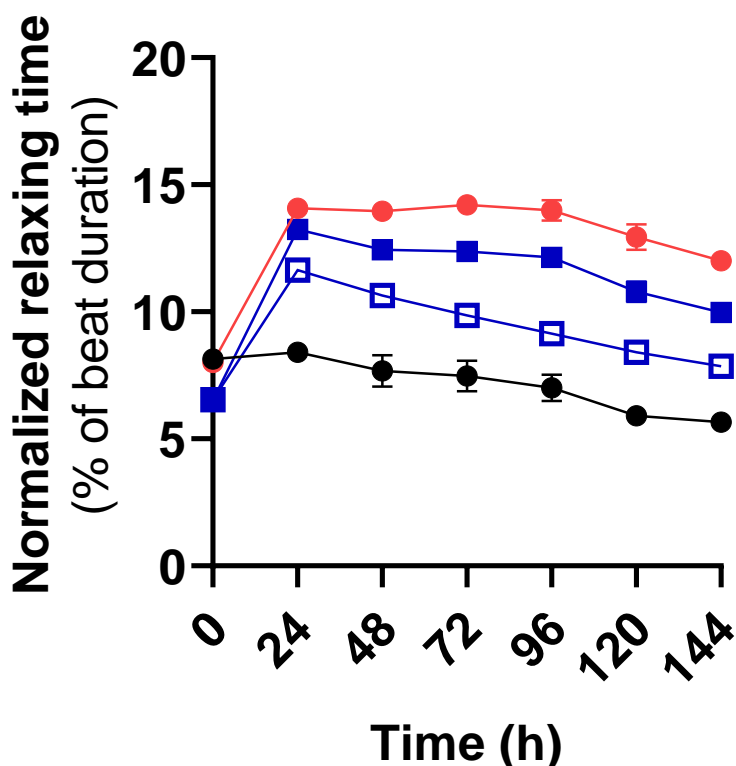


AND MORE...

- Preservation of contraction amplitude
- Alteration of contraction kinetics
- Dysregulation of beating rate
- No proarrhythmic influence
- Heart failure biomarkers release

MODELIZING HFpEF FUNCTIONAL AND STRUCTURAL HALLMARKS IN HUMAN INDUCED PLURIPOTENT STEM CELLS DERIVED CARDIOMYOCYTES (hiPSC-CM)

Study of treatment efficacy with marketed and clinically relevant drugs (examples of empagliflozin, losartan and bosentan)



- control (n=6)
- HFpEF (n=8)
- HFpEF + EMPA 10 µM (n=6)
- HFpEF + EMPA 10 µM + LOS 10 µM + BOS 10 µM (n=5)

→ The alteration of relaxation time ('diastolic dysfunction') induced by PhysioStim's HFpEF cocktail is attenuated by empagliflozin (EMPA) and strongly reversed by EMPA combo with losartan (LOS) and bosentan (BOS)

- REVERSIBLE WITH PHARMACOLOGICAL TREATMENTS
- PROGRESSIVE AND STABLE PHENOTYPE
- PROVIDES CHRONIC/LONG-TERM MONITORING

PHYSIOSTIM'S HFpEF IN VITRO MODEL ENABLES THE EVALUATION OF THERAPEUTIC EFFECTS OF PHARMACEUTICAL COMPOUNDS ON THE ONSET OF HFpEF PHENOTYPE

